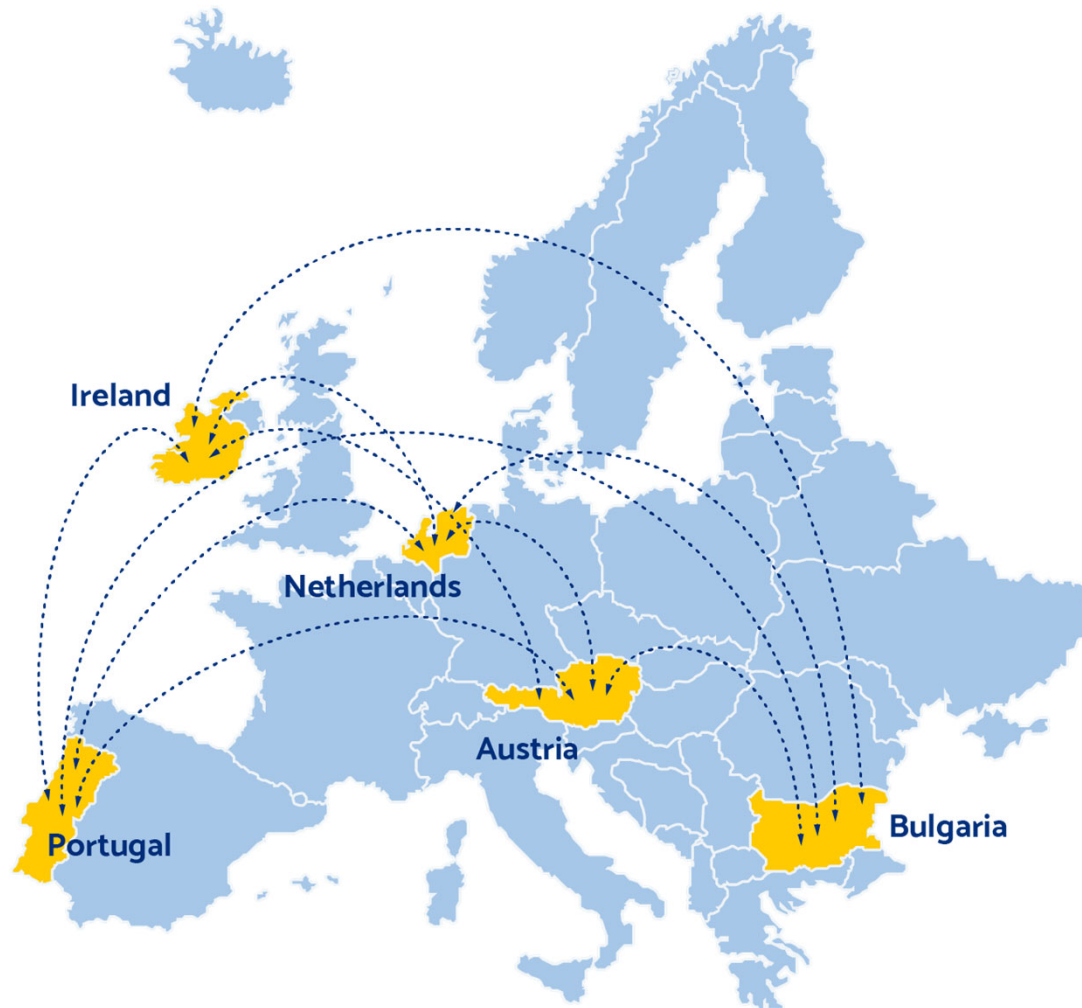


BeyondScale

Developing the Organisational Capacity of
Higher Education Institutions using the
HEInnovate platform to facilitate peer learning
and a pan-European community of practice

10 partners from 5 EU member states



- ... one of the Forward-Looking projects with the aim of developing and enhancing the use of HEInnovate in their entrepreneurial transformative activities;
- ... with the aim to create a pan-European community of practice, that shares and documents emerging good practices based on the outcomes of the individual and collaborative activities of the participants

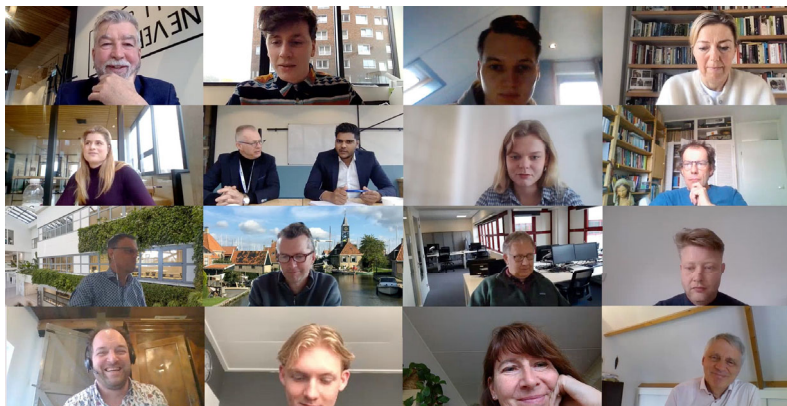
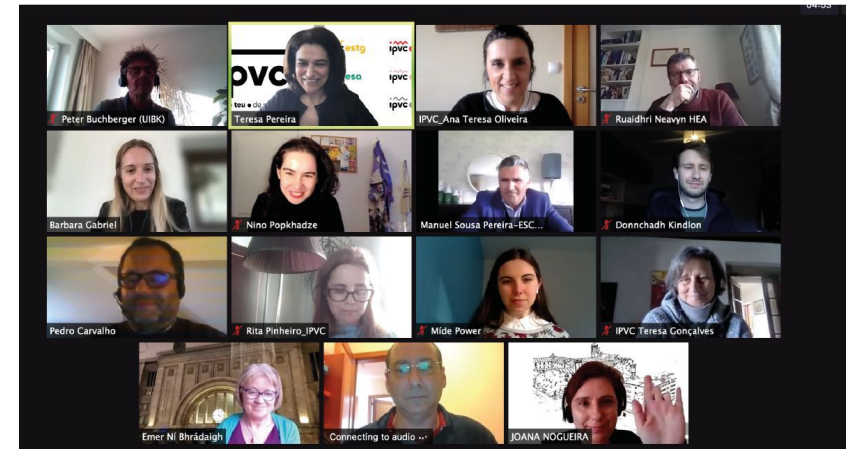
BeyondScale and HEInnovate



Within the BeyondScale project, the HEInnovate tool is deployed beyond its self-assessment capacity. The HEInnovate dimensions are used to drive entrepreneurial and innovative change across a range of inbound and outbound education and engagement activities in higher education institutions with relevant stakeholders.

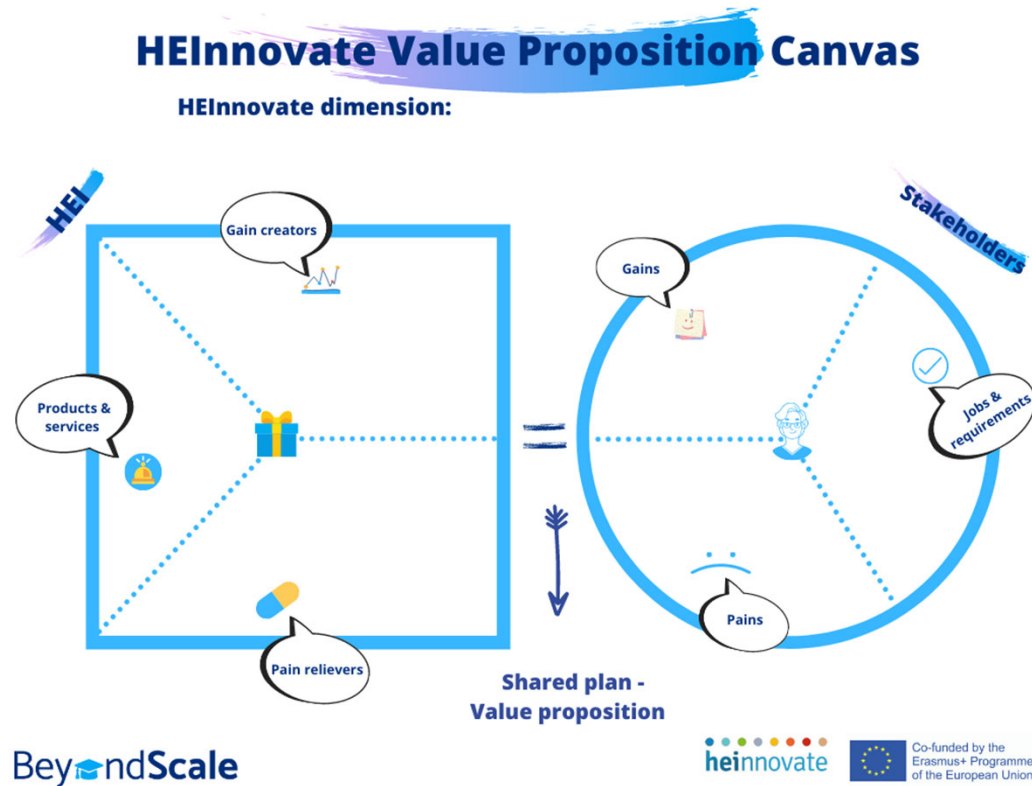
BeyondScale activities – inbound and outbound

- The inbound activities serve to support HEI's institutional development process and organisational capacity; therefore, it targets internal stakeholders (administrative staff, academics, researchers, students).



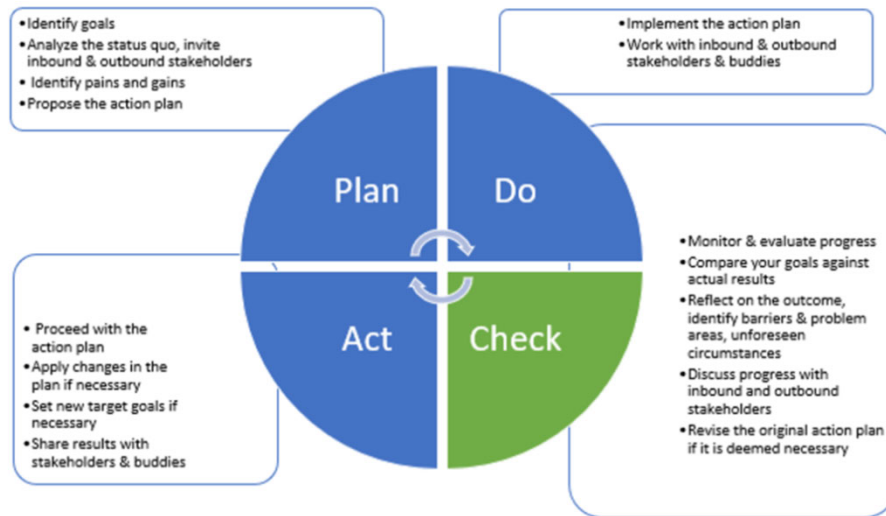
- As for the outbound activity, it aims at strengthening HEI's wider regional and societal engagement, thus it targets external stakeholders (students, employers, social enterprises, business, NGOs).

A structured workshop format

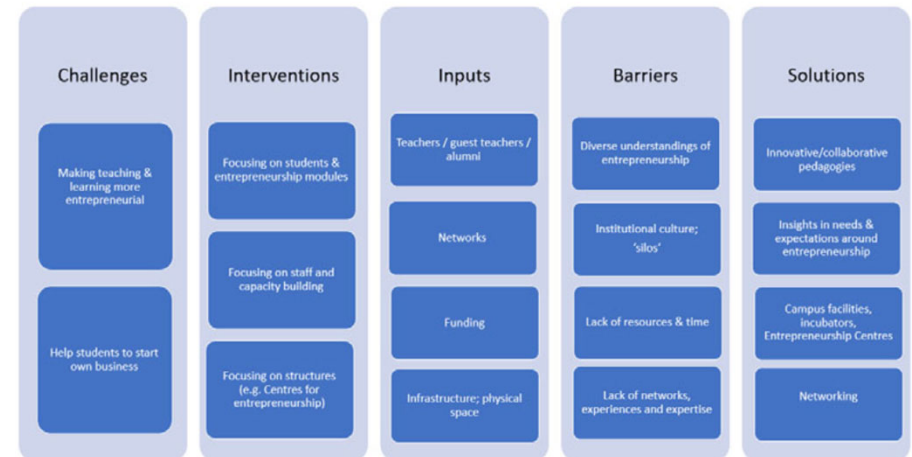
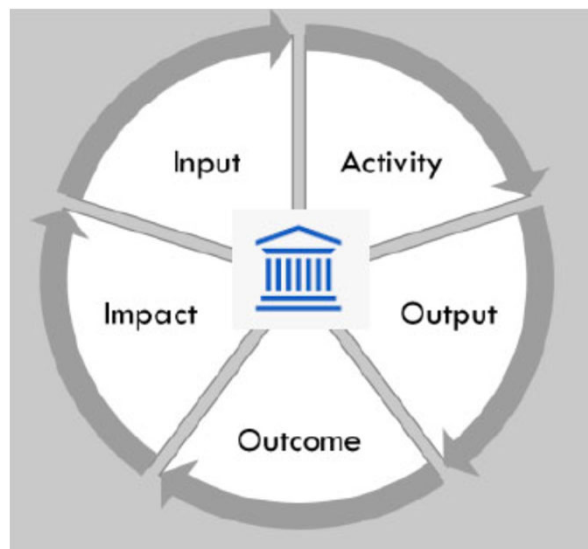


- In order to have a structured workshop format, the Value Proposition Design approach was adopted - with a new format which involves the HEInnovate dimensions and Value Proposition canvas.
- A Value Proposition expresses the value (gain) that stakeholders and the HEI can derive from engaging in the collaborative activity – it shows what stakeholders really want and shows the benefit offered to stakeholders through the project

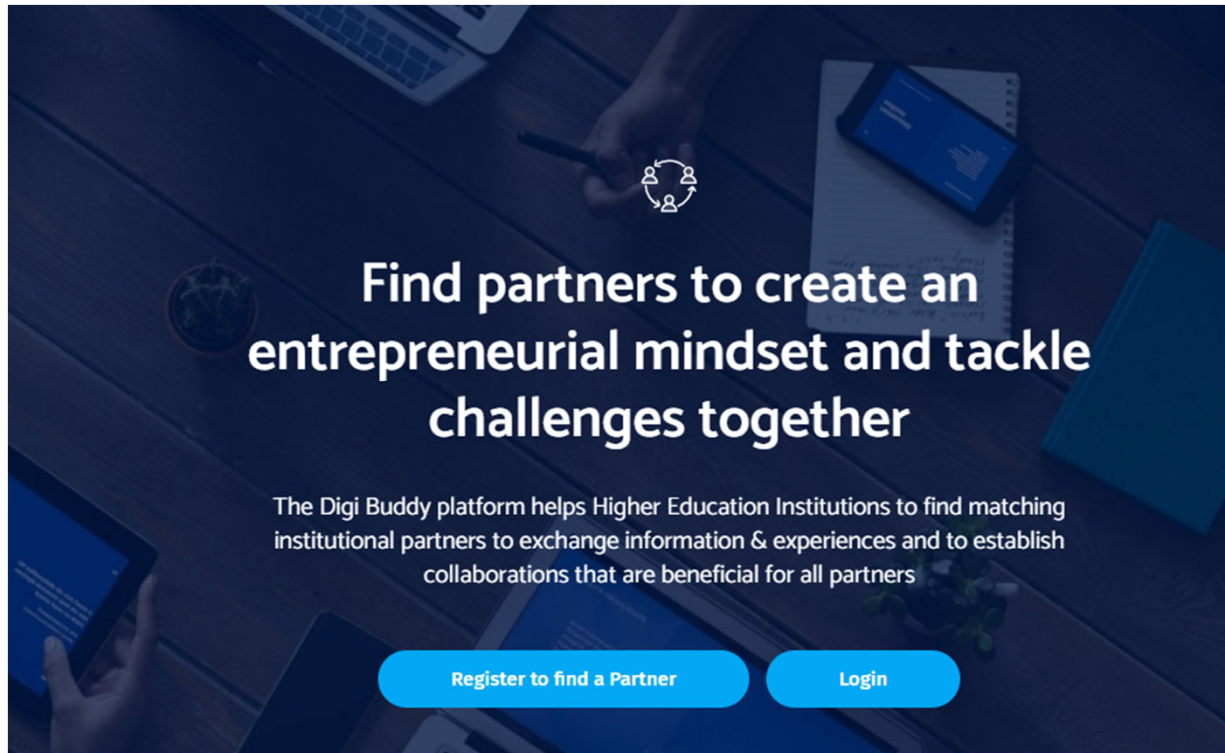
Accompanying Research



- Using HEInnovate to support change processes in Higher Education Institutions
- Enhancing the use and usefulness of the HEInnovate tool



Spin-off project – Digi Buddy

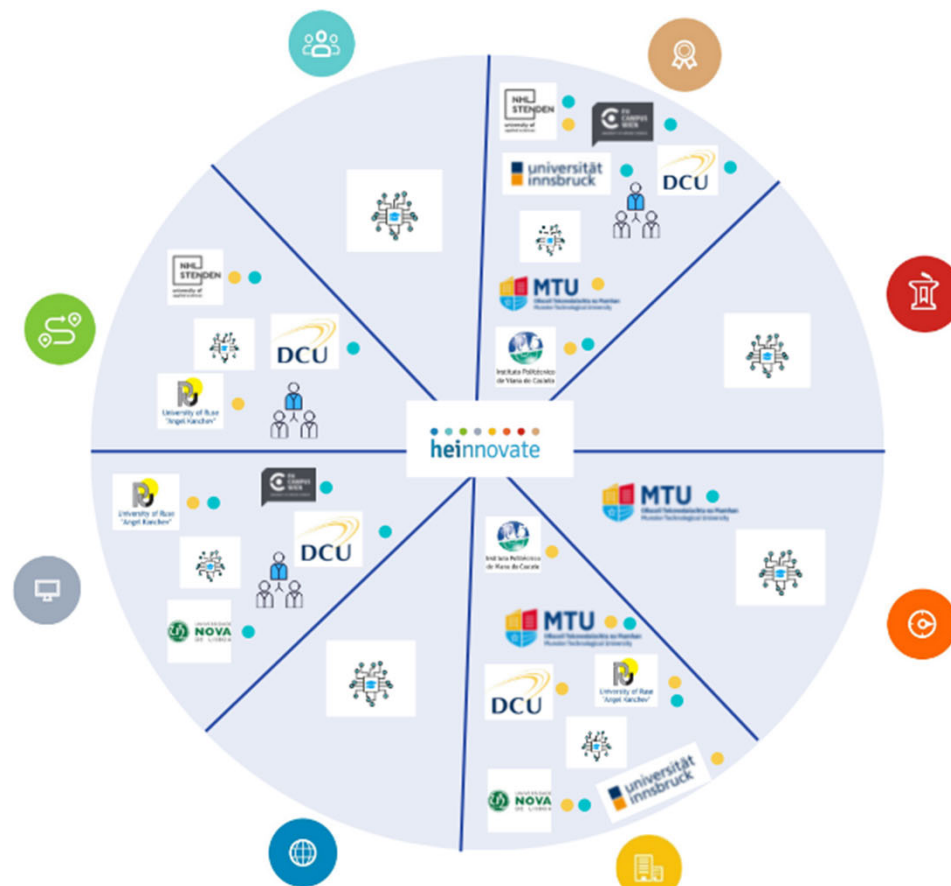


- Digi Buddy is a digital platform that supports Higher Education Institutions finding institutional partners for peer learning and supports their collaboration and capacity building during institutional transformation with evidence-based tools.
- It is a process-oriented and interactive tool to support the HEI's transformation and capacity building, providing support in areas linked to the dimensions that currently are addressed by HEInnovate.

Spin-off project – Teacher network

- an international teacher network based on an action plan that will define the details of the network has been kicked off
- The network shall focus on building entrepreneurial education, that is effective, innovative and attractive, and might contribute massively to knowledge-, skill- and attitude development in and among the area of entrepreneurship.





DIGI Buddy



Teachers' Network



Outbound Activity



Inbound Activity

